

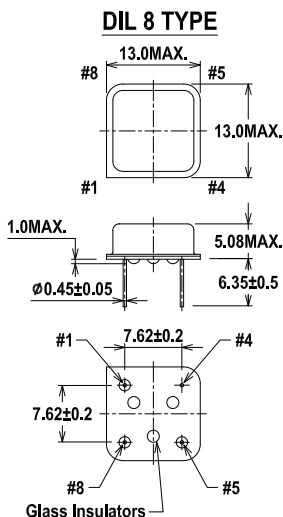
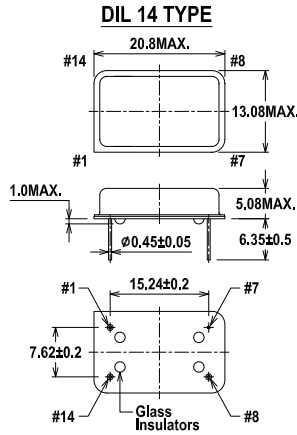
Application

- Phase-locked loops encountered in Telecom, LAN and Wireless data, and in video processing applications LVCMOS, LVTTTL compatible. ,
- Pb free product

Options

- Stick
- Tape & Reel

Dimension(mm)



| No. | Pin Connection |
|---------|-----------------|
| # 1 | Control Voltage |
| # 7(4) | GND |
| # 8(5) | Output |
| # 14(8) | Vdc |

Standard Specification

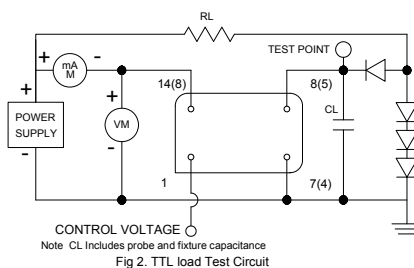
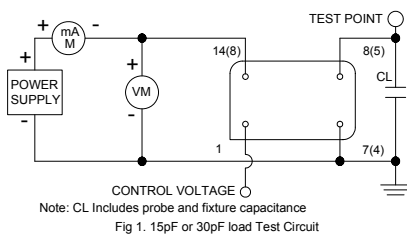
(Nominal frequency referenced to frequency at 25 °C ± 2 °C)

| | +5Volt | | +3.3Volt | |
|-----------------------|---|------------------|--|------------------|
| Logic Family | TTL or HCMOS | | HCMOS | |
| Frequency Range | 1.544 ~ 20MHz | 20+ ~ 35.3280MHz | 1.544 ~ 20MHz | 20+ ~ 35.3280MHz |
| Frequency Stability | +/-25ppm , +/-30ppm , +/-50ppm | | | |
| Operating Temp. Range | 0°C ~ +70°C , -10°C ~ +70°C , -40°C ~ +85°C | | | |
| Storage Temp. Range | -55°C ~ +125°C | | | |
| Input Voltage | + 5.0 Vdc ± 10% | | + 3.3 Vdc ± 10% | |
| Control Voltage | 1.0 ~ 4.0Volt , 0.5 ~ 4.5 Volt , 0.0 ~ 5.0Volt | | 0.3 ~ 3.0 Volt or 0.0 ~ 3.3Volt | |
| Pullability | +/-50ppm , +/-100ppm , +/-150ppm , +/-200ppm | | +/-50ppm , +/-100ppm , +/-150ppm , +/-200ppm | |
| Input Current | 20mA Max | 25mA Max | 20mA Max | 25mA Max |
| High Level ("1") | +2.4Volt Min@TTL or +90% VDD Min@HCMOS | | +90% VDD Min | |
| Low Level ("0") | +0.4Volt Max@TTL or +10% VDD Max@HCMOS | | +10% VDD Max | |
| Rise & Fall Time | 10 ns Max | | | |
| Symmetry | 40% ~ 60% (@ +1.4Volt DC Level@TTL or +50% VDD@HCMOS) | | 40% ~ 60% (@ +1.4Volt DC Level or +50% VDD) | |
| Output Load | 1TTL , 2TTL , 5TTL , 10TTL or 15pF , 30pF | | 15pF , 30pF | |

Parts Number Guide

| Classification | Description | | | | | | | | |
|---------------------|-------------|---|---|---|---|---|---|----|---------------------------|
| Example | M | 5 | B | H | 7 | 2 | F | -- | 14.318180 MHz (Frequency) |
| Logo | M | | | | | | | | MDX-KONY |
| Input Voltage | | 3 | | | | | | | +3.3Volt |
| | | 5 | | | | | | | +5.0Volt |
| Frequency Stability | | | 1 | | | | | | +/-50ppm (0 ~ 70°C) |
| | | | A | | | | | | +/-25ppm (0 ~ 70°C) |
| | | | B | | | | | | +/-50ppm (-40 ~ 85°C) |
| | | | C | | | | | | +/-50ppm (-10 ~ 70°C) |
| | | | D | | | | | | +/-30ppm (0 ~ 70°C) |
| Logic | | | H | | | | | | Custom |
| Control Voltage | | | | | | 5 | | | 0.3 ~ 3.0Volt@+1.65Volt |
| | | | | | | 6 | | | 0.0 ~ 3.3Volt@+1.65Volt |
| | | | | | | 7 | | | +2.5@±2.5Volt |
| | | | | | | 8 | | | +2.5@±2.0Volt |
| | | | | | | 9 | | | +2.5@±1.5Volt |
| Pullability | | | | | | | 1 | | +/-50ppm |
| | | | | | | | 2 | | +/-100ppm |
| | | | | | | | 3 | | +/-150ppm |
| | | | | | | | A | | +/-120ppm |
| | | | | | | | B | | +/-200ppm |
| Package Size | | | | | | | F | | Standard size(DIL 14) |
| | | | | | | | K | | Standard size Gull wing |
| | | | | | | | H | | Half(DIL 8) |
| | | | | | | | J | | Half size Gull wing |

Test Circuit



Output Waveform

