



Voltage Controlled-Temperature Compensated Crystal Oscillator



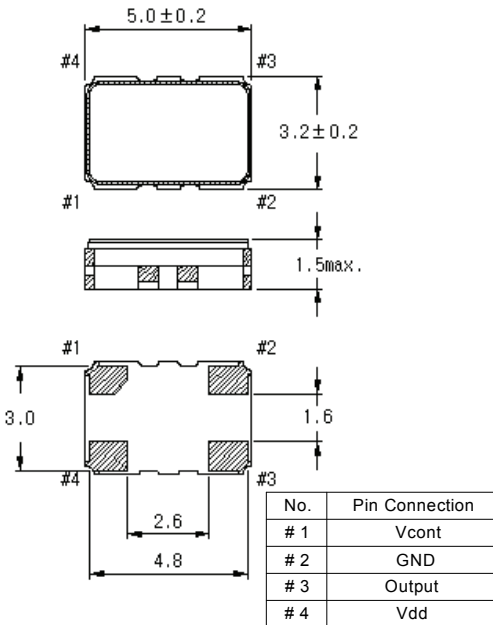
◆ Application

- Cellular Telephone (GSM,PDC, TDMA,CDMA) .
- Pb free product

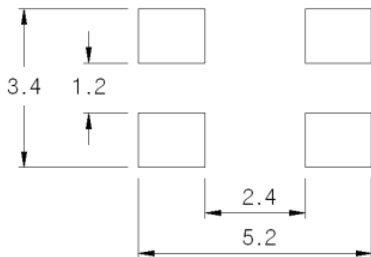
◆ Options

- TAPE & REEL

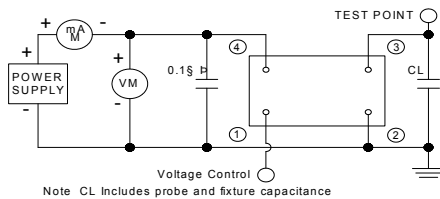
◆ Dimension(mm)



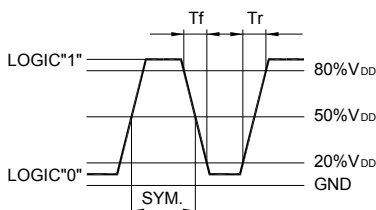
◆ Recommended Land Pattern



◆ Test Circuit



◆ Output Waveform



◆ Standard Specification

(Nominal frequency referenced to frequency at 25 °C±2 °C)

	MVT5-S Series
Logic Family	Clipped Sine wave
Frequency Range	8.000 ~ 33.000MHz
Frequency Stability	+/-2.0ppm , +/-2.5ppm , +/-5.0ppm
Operating Temp.Range	-20°C ~ +70°C, -30°C ~ +75°C , -40°C ~ +85°C
Storage Temp.Range	-55°C ~ +125°C
Input Voltage	+ 3.3 Vdc ± 5%
Input Current	2.0mA Max
Output Level	+0.8 Volt Vp-p MIN
Aging	+/- 1 ppm/year Max
Pullability	+/-3pm , +/-15ppm (@Vcont=1.5VDC±1.0V)
Output Load	10Kohm/10pF
Phase Noise	-135 dBc/Hz max @ 1 kHz

◆ Parts Number Guide

Classification	Description								
Example	M	VT	5	-	S	2	7	A	20.000000 MHz (Frequency)
Logo	M								MDX-KONY
Product		VT							VCTCXO
Package size			5						5 X 3.2mm
Output Level					S				Clipped Sine wave
Temperature Range						4	8		-40°C ~ +85°C
						3	8		-30°C ~ +80°C
						3	7		-30°C ~ +75°C
						2	7		-20°C ~ +70°C
						1	6		-10°C ~ +60°C
						0	5		0°C ~ +50°C
Frequency Stability & Pullability								A	+/-2.0ppm , Pullability +/-3 ppm
								B	+/-2.5ppm , Pullability +/-3 ppm
								C	+/-5.0ppm , Pullability +/-3 ppm
								D	+/-2.0ppm , Pullability +/-15 ppm
								E	+/-2.5ppm , Pullability +/-15 ppm
								F	+/-5.0ppm , Pullability +/-15 ppm

2009.06b All specifications are subject to change without notice