

◆ Application

- Gigabit Ethernet
- Fiber Channel
- ADSL,DSL,DS3,ES3,E1,STS-1,T1
- Network Processors, Voice Over Packet
- Pb free product

◆ Options

- Stick

◆ Standard Specification

(Nominal frequency referenced to frequency at 25°C ± 2°C)

MHC/MHH	
Logic Family	HCMOS
Frequency Stability	+/-25ppm , +/-50ppm , +/-100ppm
Operating Temp.Range	-20°C ~ +70°C
Storage Temp.Range	-55°C ~ +125°C
High Level ("1")	+90% V _{DD} Min
Low Level ("0")	+10% V _{DD} Max
Symmetry	40% ~ 60% (@ +50% V _{DD} Level)

MHC,MHH,MTH	Input Voltage +5.0Vdc ±10%					Input Voltage +3.3Vdc ±10%					Input Voltage +1.8Vdc ±5%		
	0.500 ~ 6.000	6.000+ ~ 24.000	24.000+ ~ 106.250			0.500 ~ 6.000	6.000+ ~ 24.000	24.000+ ~ 106.250			0.500 ~ 6.000	6.000+ ~ 24.000	24.000+ ~ 70.000
Frequency Range(MHz)	12mA Max	20mA Max	35mA Max	50mA Max	65mA Max	20mA Max	25mA Max	30mA Max	35mA Max	60mA Max	10mA Max		
Input Current	8.0 ns Max	5.0 ns Max	3.0ns Max	4.0 ns Max	3.0 ns Max	3.0ns Max	4.0 ns Max	3.0ns Max	4.0 ns Max	3.0 ns Max			
Rise & Fall Time	50pF		30pF	15pF	50pF	30pF	15pF	15pF					
Output Load													

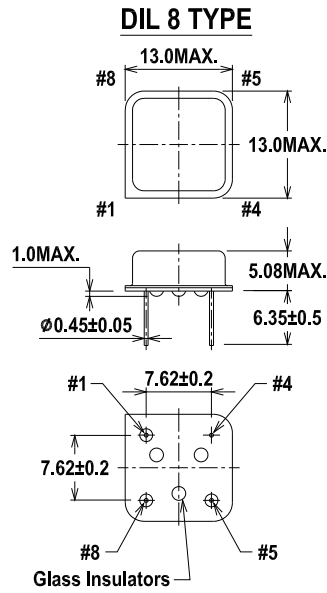
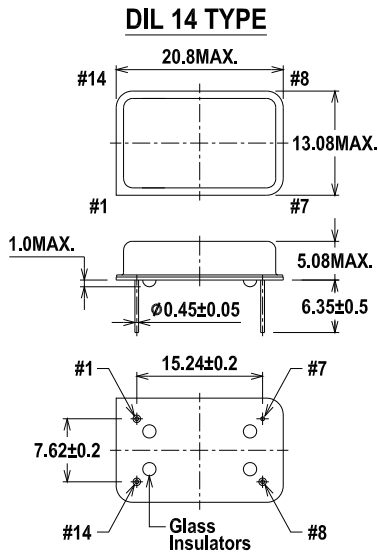
◆ Parts Number Guide

MHC / MHH											MTH										
Classification	Description										Classification	Description									
Example	M	H	C	1	1	00				-	25.0000 MHz (Frequency)	Example	M	T	H	0	6	0	C	-	25.0000 MHz (Frequency)
Logo	M										MDX-KONY	Logo	M								MDX-KONY
Logic		H									HCMOS		T							Tri-state	
Case			C								DIL 14			H						HCMOS	
			H								DIL 8										
Symmetry				1							45/55,less than 50MHz or 40/60,more than 50MHz	Symmetry				0					45/55,less than 50MHz-40/60, more than 50MHz / -20°C+70°C
				2							45/55,more than 50MHz				1					45/55,more than 50MHz / -20°C+70°C	
Frequency Stability						00					+/-100ppm	Freq. Range				3					0.500MHz ~ 6.000MHz
						45					+/-50ppm				6					+6.000MHz ~ 24.000MHz	
						44					+/-25ppm				8					+24.000MHz and more	
Temperature Range						()					-20°C ~ +70°C (Standard)	Case				0					DIL 14
						A					-40°C ~ +85°C				9					DIL 8	
						B					-20°C ~ +85°C	Frequency Stability						A			+/-25ppm
Supply Voltage						()					+5.0V						B			+/- 50ppm	
						3					+3.3V						C			+/-100ppm	
						2					+1.8V	Supply Voltage						()			+5.0V
																	3			+3.3V	
																	2			+1.8V	

Crystal Oscillators

Manufactured by OLE

◆ **Dimension(mm)**

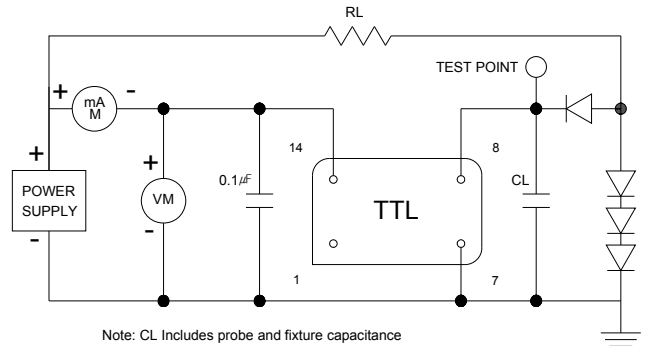
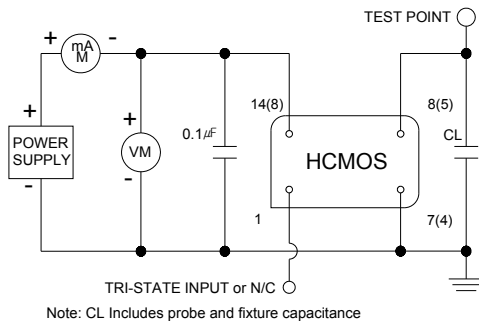


◆ **Pin Connection**

DIL 14 TYPE	
Pin No.	Pin Functions
#1	Tri-State or N/C
#7	GND
#8	Output
#14	Vdc

DIL 8 TYPE	
Pin No.	Pin Functions
#1	Tri-State or N/C
#4	GND
#5	Output
#8	Vdc

◆ **Test Circuit**



◆ **Output Waveform**

